



STANTONBURY
SCHOOL

Year 6 Student Guide



Contact Us

Stantonbury School
Stantonbury
Milton Keynes
MK14 6BN

Tel: 01908 324400
stantonbury-tove.org.uk

Welcome



Welcome to Stantonbury School, we hope that you find this guide useful in giving you essential information as a new student to the school.

The guide outlines our expectations, values and explains some of the common routines systems and processes that we use at Stantonbury.

We expect good attendance, hard work and excellent behaviour from students who take pride in being members of Stantonbury School.

I am really looking forward to working with you and your child as you join the Stantonbury community.

The next 5 or 7 years at secondary school are so important and with support from parents, we will prepare your child for adult life.

Ben Wilson, Associate Principal

Our Values



Our values of **respect**, **responsibility** and **resilience** are woven into everything that we do at Stantonbury School so that every single child can reach not only their academic ability but to embrace opportunities beyond the classroom in order to develop resilient, responsible and respectful citizens.

The School Day

The table below shows the timings of the school day.
Bells ring across the site to tell students when to move.
A five minute warning bell sounds before the end of break and lunch so that students know they should start to make their way to the next lesson.

All students should be in school by 08.40am through the main school gates.

Students who arrive after 08.45am must sign in with Student Services.

School Gates open 08.30am

All students must be on site 8.40am

Morning Tutorial 8.45-9.05am

Lesson 1
09.05am - 10.05am

Lesson 2
10.05am - 11.05am

Break
11.05am - 11.25am

Lesson 3
11.25am - 12.25pm

Lesson 4
12.25pm - 13.25pm

Lunch
13.25pm - 14.00pm

Lesson 5
14.00pm - 15.00pm

Afternoon Tutorial :
15.00pm - 15.15pm

Enrichment
15.15pm - 16.15pm



How to prepare

Pack your bag for school the night before. Check your timetable and make sure you have your pencil case, books, PE kit and any other equipment you will need for your lessons the next day.

Get your uniform ready to put on in the morning

Set your alarm to give you plenty of time to get ready for school and travel in, so that you have arrived at school by 8:40. If you know you need to see a teacher or speak to someone at student services, you should aim to arrive a little earlier to give you time to do this and then get to your first lesson promptly.

Getting lost and being late

Stantonbury is a big site with over 1500 students. Students arriving into year 7 have come from much smaller primary schools and understandably are worried about getting lost or being late to lessons. In the first few weeks of term the new year 7 students will quickly get used to their new timetable and the layout of the school. Staff are aware that there may be students who get lost along the way and are flexible about students who arrive a little late! By the end of the first few weeks we then hold higher expectations that they will arrive to lessons on time.

Mobile Phones

We recommend that you do not bring a mobile into school unless absolutely necessary. If you do have to phone home, you can do this from Student Services. Your tutor will be able to explain the process for this during your first few days with us. If you do bring a mobile phone into school, it is at your own risk, and it must not be seen or used in school under any circumstances.

School ready checklist

- School bag
- pencil case
- calculator
- school planner
- lunchbox or dinner money/card
- water
- reading book/library books
- P.E Kit
- Any other equipment
- Any letters to take to school?



Top Tips

- Look at your timetable and make sure you know where to go and when.
- Make sure you have the right books and equipment for each lesson.
- Teachers won't expect you to get every answer right, but they will be impressed if you try your best and 'have a go' at learning new things.
- It might seem hard to make new friends, but everyone is feeling the same way, say hello!
- Sometimes things won't go your way, and this is normal and happens to everyone so don't worry. Just say to yourself, tomorrow's another day!
- If someone else seems to be having a hard time, try to help. This is a good way to make friends.
- If you do something wrong or forget something, it's much better to own up straight away.
- Believe in yourself! You can do it!

Teacher Profile



Gareth Morris
Year 7 - HoY

I have had the privilege of serving as Head of Year 7 at Stantonbury School for the past two years. I look forward to the opportunity to lead and teach your child when they join us in Year 7.

gareth.morris@stantonbury-tove.org.uk



Carol Leckie Year 7 - SSL

I am the Student Support Leader for Year 7. My office is in Fielding. I will help you when you are stuck or need help with anything. I will be seen mainly in Fielding, often popping into your Tutor base with messages or rewards. Please pop by and say hi!

carol.leckie@stantonbury-tove.org.uk



Alicia Kayll SENDCo

I'm the SENDCo at Stantonbury School. My office is in the SEND Base, but you'll often see me around the school. Our friendly team is here to support you in lessons and interventions. I look forward to meeting you and discovering how we can best support your success.

alicia.kayll@stantonbury-tove.org.uk

FAQs

The following is a list of questions that many students joining us at school have asked in the past. We hope you find them helpful.

When does the school day start?

The school day starts at 09:05 with lesson 1. The school gates open at 08:45 and you should be on school site no later than 08:45 and go straight to your first lesson.

I will be coming to school by car, where does my parent / carer park?

Families should drop/collect their child from the 'drop off' bay, which is located on Fairfax, off Saxon Street. Students will then be able to safely enter/leave the school premises via the underpass. For safety reasons we thank you for not dropping/collecting your child from the main school car park.

Getting lost

We are a big school with a large site and chances are that you will get lost at some point. There is no need to worry as there will always be staff members on duty around the site to ask. Staff are approachable and friendly and won't mind you asking for help. You can also make your way back to Student Services who will be able to help you find your way and you can use one of our site maps to help you get around. Towards the beginning of the year, we will also show you around the site to help you get your bearings.

What happens if I don't know anyone?

Firstly, don't worry everyone starting new will be feeling the same. Our Stantonbury students are friendly and helpful, we have put a lot of work into creating a nice atmosphere and a positive culture around the school which you'll experience when you join us in September. Stantonbury students are also used to helping others and often lend a hand in supporting the new Year 7 students when they join the school.

FAQs

Lesson expectations / teacher expectations

We set high standards for our students at school, and you will become familiar with our 'climates for learning' which help to guide you in each lesson as to the expectations. These will be the same in each lesson you have at Stantonbury. Listen to the teacher instructions as they will be clear in explaining what is needed and will not mind if you need to ask again for a reminder.

Friends

You will have many opportunities to make lots of new friends, there are a lot of people who won't know anyone when they join in September so don't feel alone. During the social times of the day, you will have the opportunity to meet up with old friends or perhaps take part in one of our many clubs (free to join) and have fun making friends who enjoy the same activities as you.

Behaviour & Rewards

We have a clear structure for consequences and rewards and the staff will give clear warnings before it gets to a detention, and you will always be given an opportunity to make the right choice before it gets to this stage.

Bullying

We are very proud to have some of our current year 7 students who have been trained up as anti-bullying ambassadors who support students, act as link between you and the teachers and call out any poor behaviour. We also have a long track record of resolving bullying issues. Rest assured this is not something which we tolerate, and it is sanctioned.

FAQs

Will I need my PE kit for my first day?

No, if you have PE on your first day you will be engaging in activities that would be suitable for your new uniform. Once you receive your timetable in the morning you will know when to bring your PE kit in the future.

Can I bring my mobile phone?

We recommend that you do not bring a mobile into school unless absolutely necessary. If you do have to phone home, you can do this from Student Services. Your tutor will be able to explain the process for this during your first few days with us. If you do bring a mobile phone into school, it is at your own risk, and it must not be seen or used in school under any circumstances.

Key contact

Your form tutor will always be your first point of contact for anything whilst you are at Stantonbury. Should you need to, your SSL (Student Support Leader) and HoY (Head of Year) will also be on hand to support your concerns.

Lunches

We are a cashless school and therefore, you will use your fingerprint (Biometrics) to pay for any meals. Someone at home can preload money onto your account via an online system (ParentPay). You will have more details on this when you join. If you are eligible for free school meals then you will have to reapply for this, it does not automatically transfer over from primary school, once accepted the money for a meal will be loaded onto your account for you each day. If you prefer you can bring a packed lunch as many people do and there are several dining spaces and outside areas where you can enjoy your lunch.

FAQs

Being late / ill

It is really important to be in school each day and on time. If you are late someone will meet you by main reception at student services to mark you in and let you into the school. This will be logged so if there is a reason for the lateness then please tell us. Unlike primary schools we do expect you to come in even if you're not feeling too well or have a cold for example. If you are feeling really unwell and need to see a doctor, then please ask an adult at home to contact school and advise of your absence. Unless we have evidence like a doctors note / appointment letter then this will be an unauthorised absence and could lead to a fine. If you feel unwell during the day, then speak to your class teacher who will either call for a first aider or send you to our first aid room.





STANTONBURY
SCHOOL

At Stantonbury School we work together to develop and demonstrate the Stantonbury values in all that we do.



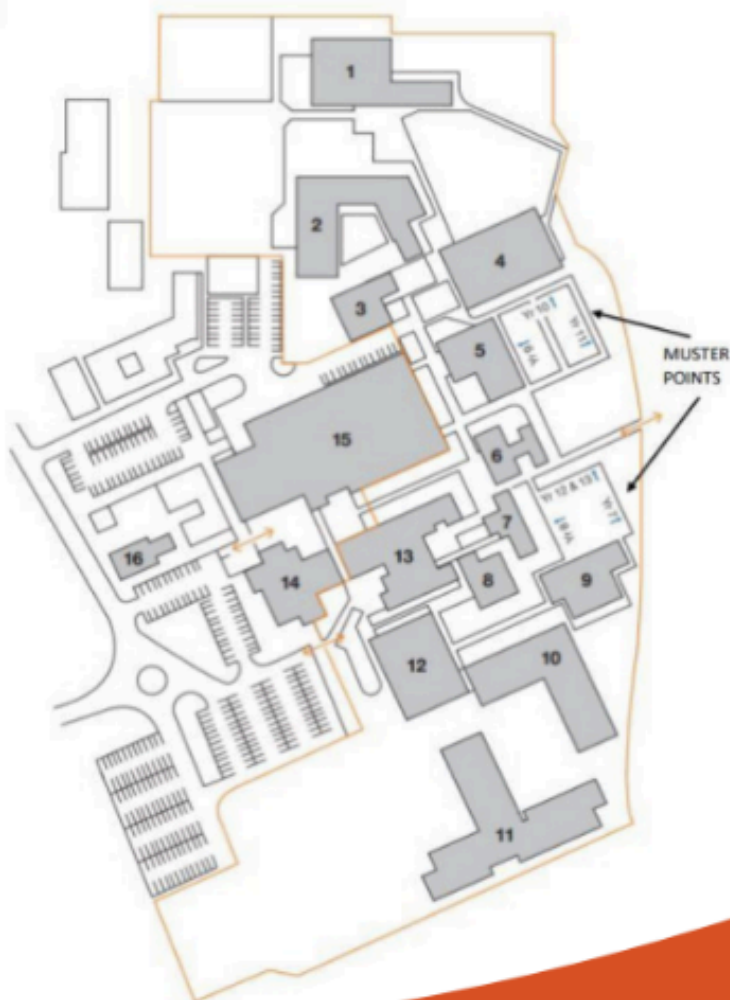
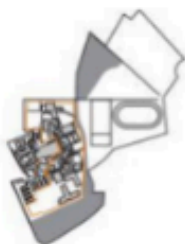
Good luck, Year 6!

We can't wait to see you at Stantonbury
School!

Stantonbury School Map



STANTONBURY
SCHOOL



- | | | | | | |
|---|-------------|----|---------|----|----------------|
| 1 | Brighthouse | 6 | Saxon | 12 | Danstead |
| 2 | Fielding | 7 | Monks | 13 | Cooksey |
| 3 | Dining Room | 8 | SEND | 14 | Theatre |
| 4 | Grafton | 9 | Nevitt | 15 | Leisure Centre |
| 5 | Ashurst | 10 | Portway | 16 | Compound |
| | | 11 | Turing | | |

Contact Us

Stantonbury School
Stantonbury
Milton Keynes

MK14 6BN
01908 324400

enquiries@stantonbury-tove.org.uk



STANTONBURY
THEATRE



STANTONBURY
SCHOOL



STANTONBURY
LEISURE